

备案编号： \_\_\_\_\_

西昌盘江煤焦化有限公司  
重污染天气“一厂一策”应急预案  
(2025年版)

西昌盘江煤焦化有限公司

2025年8月



---

2025

**2025 8**

2019 648

2018 875

2017 86

2013 504

2013 106

2014 119

2018 10

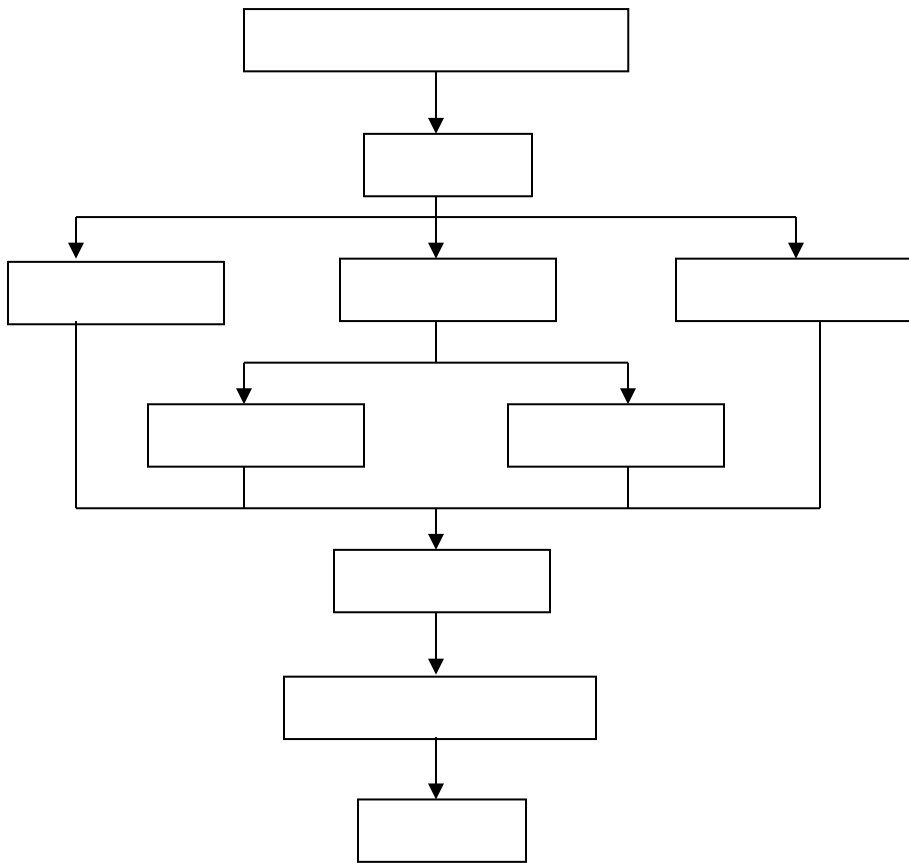
2018

---

---

---





2021 5

513401-2021-002 2025 8

1





突发环境事

件应急预案

备案文件目

- 1、重污染天气应急预案备案表；
- 2、重污染天气应急预案



2025

**2025 8**

..... 1

..... 1

..... 1

..... 2

..... 2

..... 3

..... 4

..... 4

..... 5

2.3 ..... 8

2.4 ..... 16

2.5 ..... 18

2.6 ..... 19

2.7 ..... 20

..... 26

..... 26

..... 26

..... 28

..... 31

..... 31

..... 31

..... 31

..... 31

..... 32

..... 32

..... 34

..... 34

..... 35

..... 36

..... 36

..... 37

..... 37

..... 37

..... 39

.....	39
.....	39
.....	39
.....	39
.....	41
..... !	
.....	42
.....	43
.....	44
.....	45
.....	45
.....	45
.....	45
.....	46

1			2015	1	1
2			2018	10	26
3			2016	11	7
4			2024	6	28
5			2018	1	1
6					
	2019	648			
7					
			2018	875	
8					
2017	86				
9					2013 504

10  
2013 106  
11  
2014 119  
12  
2020 340  
13  
2021 341  
14 2018  
2018 10  
15 10  
16 2025 9  
17 2022  
18  
2021 10



## 2.1.1

( 2020 340 )

## 2.1.2

## 2.1.3

1	( )	t/d	5003	
			5459	
2	NaOH(40%)	t/a	4417	
			4855	
3		t/a	1.75	
			2.2	
4		t/a	1825	

			2000	
--	--	--	------	--

1	( )	t/a	1347458	
			1470082	
2		t/a	26504	
			29243	
3		t/a	1589	
			1378	
4		m <sup>3</sup> /a	584347.19	
			697374.84	
5	18%	t/a	24980	
6	98%	t/a	9547	
			10360	

7

			m <sup>3</sup>		
11		1	90		
12		1	90		
13		2	200		
14		2	200		
15	NaOH	2	100		
16		2	100		
17	KOH	2	50		
18		2	50		
19		2	1300		
20		1	540		

## 2.3

### 2.3.1

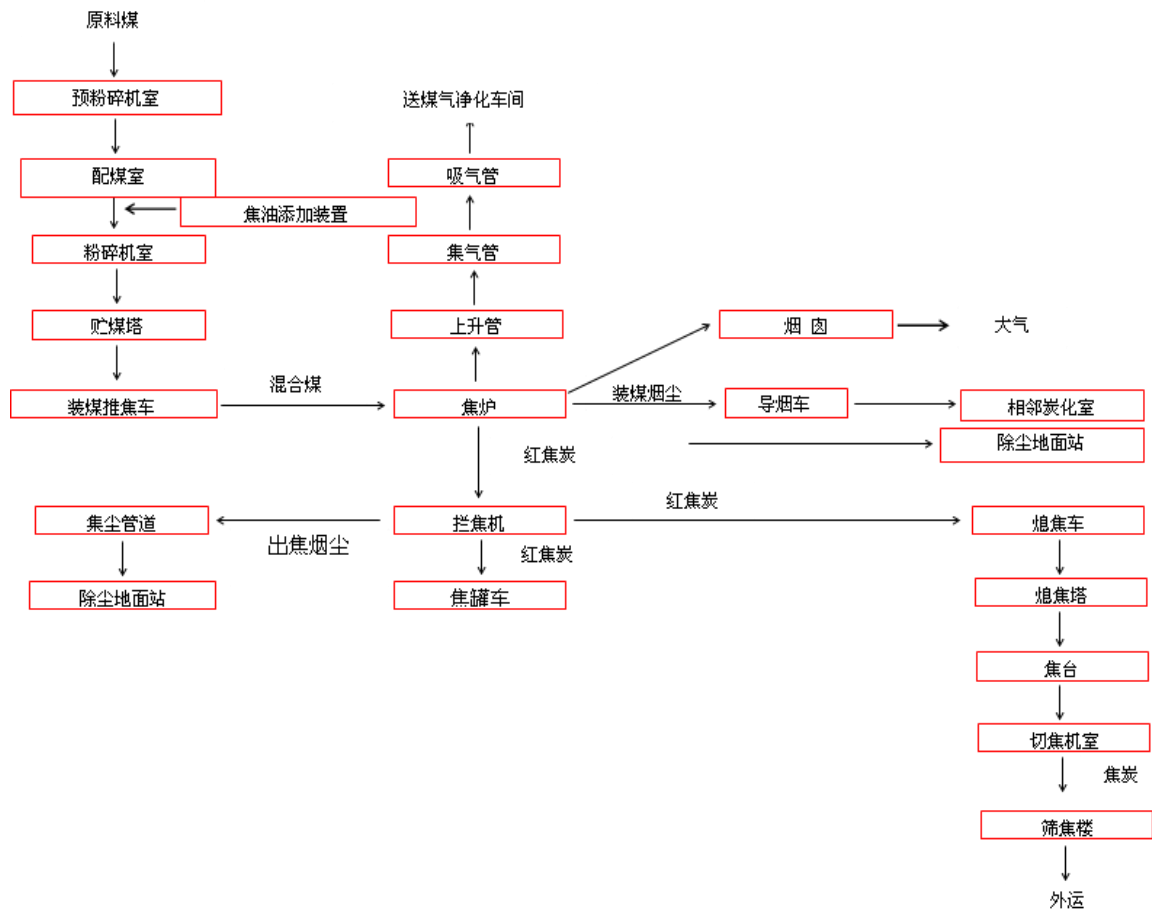
1

2

950

900

160



**2.3-1**

**2.3.2**

2

HCN

HCN

3

25

$4\text{mg}/\text{m}^3$

4

$2\text{g}/\text{Nm}^3$

20 25

$200\text{mg}/\text{Nm}^3$

$100\text{mg}/\text{Nm}^3$

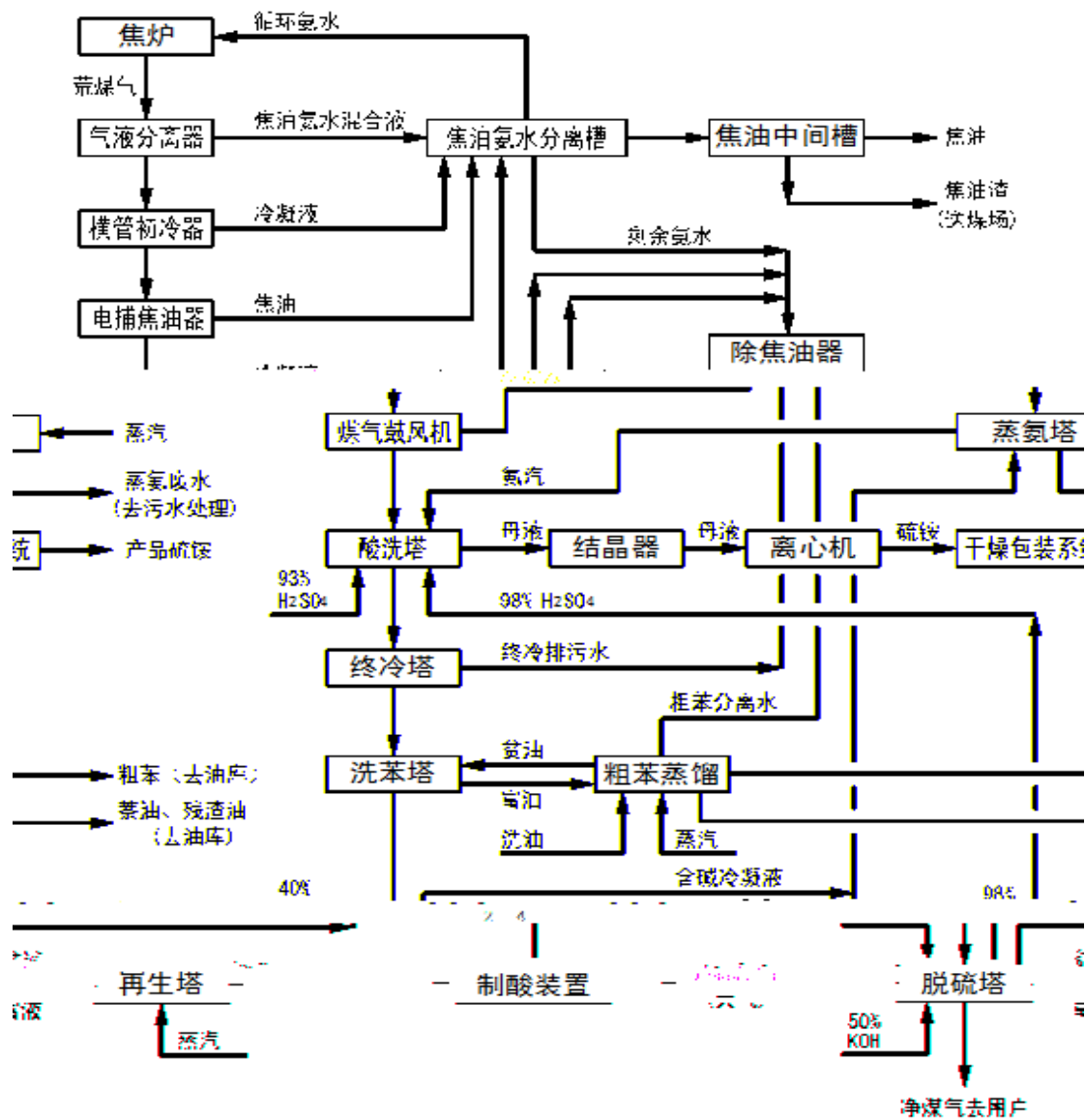
130-

6

18 Nm<sup>3</sup>

18 Nm<sup>3</sup>

2.3-2



2.3-2

**2.4**

2.4-1

**2.4-1**






## 2.6

2.6-1

					m	10 <sup>4</sup> m <sup>3</sup> /h	mg/m <sup>3</sup>	t/
				%				
	/		2	99	31.5	6/4.5	20	13.79
	/		2	99	32	6/4.9	20	14.32
	1 2		1	99	20	10	30	13.14
	3 4		1	99	30	11.5	30	15.11
	1 2		1	99	27	36	30	35.48
	3 4		1	99	30	36	20	47.3
	1 2				150	60.2	7.7	25
	3 4				155	71	7.7	27
	3 4		1	99	27	27	15	47.3
	3 4		1	99	27	28	1.58	2.32

			%	m	$10^4\text{m}^3/\text{h}$	$\text{mg}/\text{m}^3$	t/

1



2

99.85%

GB16171-2012



3

2018

2019 35



4



2.7.2

2

75.5m<sup>3</sup>/h

COD

2019

70%

GBT 50050-2017

30%

GB16171-2012 1



**2.7.3**

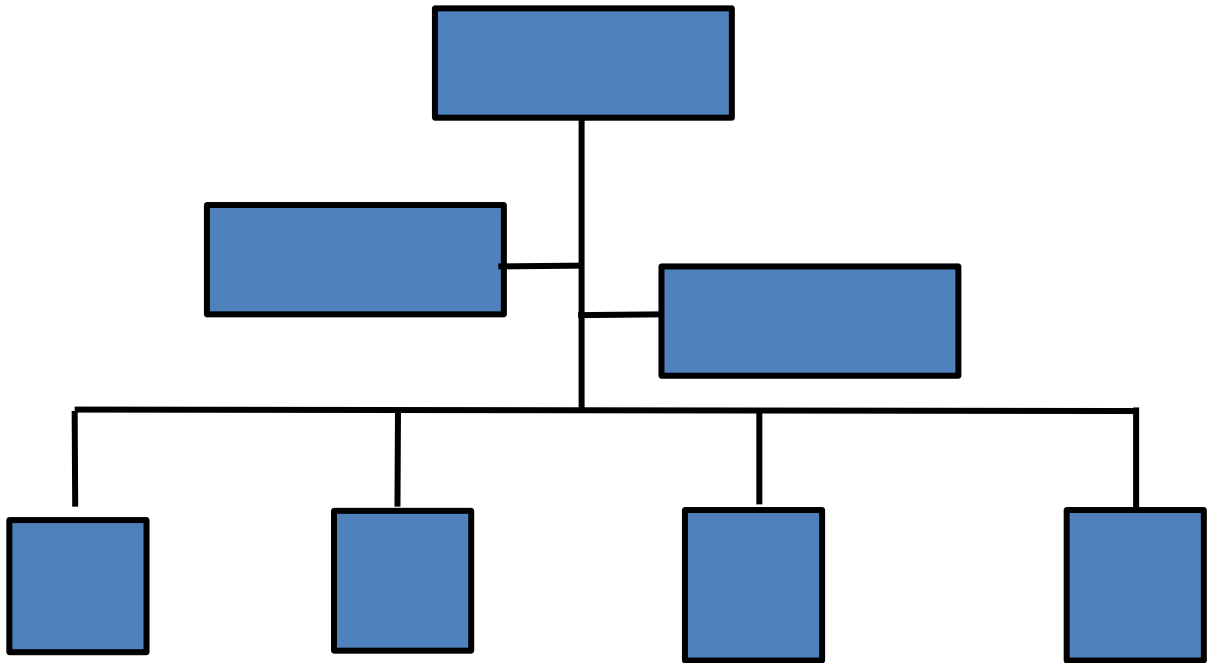
2018	5000					
	2018	8		1	2#	3 4#
90000Nm <sup>3</sup> /h						H <sub>2</sub> S
500mg/m <sup>3</sup>	20mg/m <sup>3</sup>					
H <sub>2</sub> S	4.0g/m <sup>3</sup>	200mg/m <sup>3</sup>				H <sub>2</sub> S
20mg/m <sup>3</sup>	SO <sub>2</sub>					



**2.7.4**



3.1-1



**3.1-1**

1

2

3

4

2

1

2

3

4

### **3.3.1**

1

2

3

### **3.3.2**

1

2

### **3.3.3**

1

2

3

4

5

### **3.3.4**

1

/ /

2

1

/ /

2

3

4

3

4

**3-1**

			14780649092	
			15183433597	
			18383446042	0834-6233166
			15183434711	
			15183432545	

			15183437133	
			15183431345	

15183432541

/

2

10

3

8

4

5

### **4.3.3**

I

1

2

### **4.5.1**

## 4.5.2



2023 10

B

80%

5.2-1

		kg/d	h/d
		6.03	24
		kg/d	h/d
		602.7	24
		kg/h	h/d
		1479	24

kg/h

		27.6h 27.8h		
		27.6h 27.8h	80%	15183432541 15183431348
	20.83% SO2 NOX	20% SO2 NOX	20% A	20.83%

1

[2019]35

2

2017

1

2-3

2

1

3

1

2

3

**5.8.1**

**5.8.2**

### 5.8.3





DCS PLC

7.1-1

						<b>DCS</b>	
80%		20% 2092.4	/		24		1518343254 1 1518343900 1
		/	6444.592 1611.148		24		1518343254 1 1518343359 7
		/	272.26 68.07 322.27 m <sup>3</sup> 80.57 m <sup>3</sup> 95.86 23.97 44.29 11.07		24		1518343254 1 1518343134 8
		/	/	/			1518343254 1 1518343134 8



9.1

9.2

9.3

9.4

9.5

2020

**B**



AQI

(Air Quality Index

AQI

AQI

HJ633 2.12

200

115 /

0834-6233166

**1**

**1**

			14780649092
			15183433597
			18383446042
			15183434711
			15183432545
			0834-6233166
			15183437133
			15183431345
			15183432541
			15183432544
			15183432542
			15183431005
			15183439001
			15183433597
			15183431348

2

	0834-2162972
	0834-3222657 3221917
	0834-3223730
	0812-2234141
	0834-2163720
	0834-3222406
	0834-3866622
	0834-3238697
	119
	120 0812-3390120 0834-6230120
	0834-3866166
	0834-2162972
	0834-3222102
	0834-3300244

3

		15183436590
		15183439151
		15183438977
		15183432232

